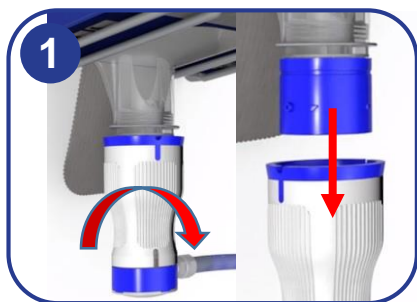




Safepack



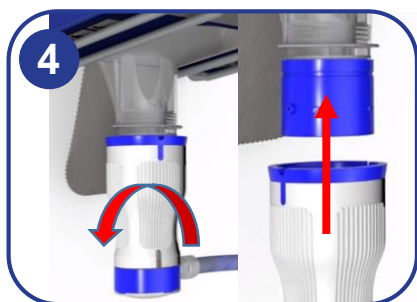
1
Disconnect the Safepack connector(s) by turning from the product pouch



2
Put the connector(s) into a bucket of warm water and leave it s to soak for a while



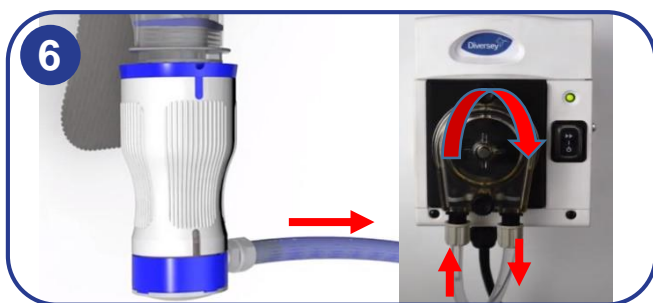
3
Check the connector for plugging / incrustation and if necessary clean it with a damp cloth or brush.
CAUTION: Take care not damage O-rings at cleaning



4
Reconnect the Safepack connector(s) by turning from the product pouch



5
Operate the `empty` dishwasher and leave it to run for a full cycle



6
Check whilst dishwasher is operating that the dosing pump(s) is (are) running and product(s) will be primed

