

Feel free to touch

Safety is just 1 wipe away



Why should you use wipes?



Full virucidal efficacy in **just 30 sec** (Coronavirus and Norovirus)



Effective against Bacteria, Viruses and Yeasts



Easy to use by **anyone, anytime, anywhere**



AHP is **faster, safer and more sustainable** than other actives



No time needed to prepare and use



Safe for users, no need for PPE



360° protection for your staff, visitors and facilities



Improves **labour efficiency by 23%** vs. traditional bucket and cloth*



Proven increase of **disinfection compliance by 35%***



Avoid & prevent **cross-contamination** of surfaces



Non flammable



Compatible with most hard surfaces



Avoid laundering cloths



Eliminates risks of spills & trips

* Results from a study published on the American Journal of Infection Control.

Use biocides safely. Always read the label and product information before use.

THINK Every frequently touched surface needs to be wiped

www.diversesey.com

These materials are provided for general information purposes only and do not replace each user's responsibility to assess the operational, legal and other requirements applicable to each facility. All logos and trademarks are owned by or licensed to Diversey, Inc. © 2021 Diversey, Inc. All Rights Reserved. 88138 MASTER 02/21

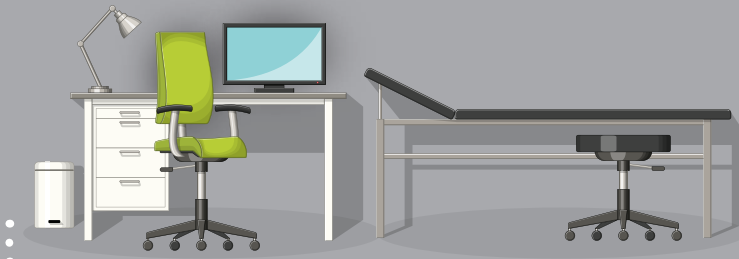


Feel free to touch

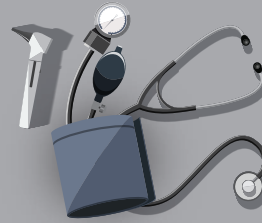
Safety is just 1 wipe away



When to wipe



Before and after each patient: wipe chair, elbow bars, table top, medical bed, door handles. Frequently wipe computer screens, keyboards and hard surfaces



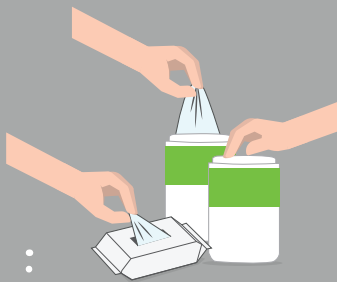
Always wipe medical devices (blood pressure gauges, stethoscopes, thermometers etc) before and after use

Wipe sink and hand hygiene dispensers twice a day

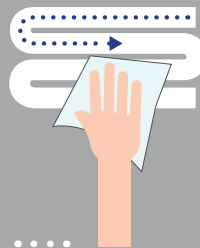


Don't forget to wipe chairs and tables in the waiting room

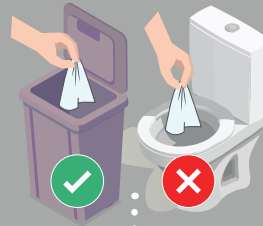
How to wipe



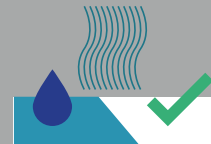
Take a wipe from the dispenser and close the pack firmly to prevent remaining wipes from drying out



Holding the wipe flat in your hand (not scrunched), wipe the surface in an 'S' shape, moving from clean to dirty. Do not go over the same surface twice with the same wipe



Dispose of used wipes in the appropriate waste bin following local policy guidelines. Save your pipes, don't flush wipes.



Allow surface to dry before use

*Refer to the compatibility data sheet
**Pending BPR approval

THINK Every frequently touched surface needs to be wiped

www.diversey.com

These materials are provided for general information purposes only and do not replace each user's responsibility to assess the operational, legal and other requirements applicable to each facility. All logos and trademarks are owned by or licensed to Diversey, Inc. © 2021 Diversey, Inc. All Rights Reserved. 88138 MASTER 02/21

Diversey
Oxivir[™]
powered by **AHP**[®]