

# Feel free to touch

Safety is just 1 wipe away



## Why should you use wipes?



Full virucidal efficacy in **just 30 sec** (Coronavirus and Norovirus)



Effective against Bacteria, Viruses and Yeasts



Easy to use by **anyone, anytime, anywhere**



AHP is **faster, safer and more sustainable** than other actives



**No time needed** to prepare and use



Safe for users, no need for PPE



**360°** protection for your staff, visitors and facilities



Improves **labour efficiency by 23%** vs. traditional bucket and cloth\*



Proven increase of **disinfection compliance by 35%\***



Avoid & prevent **cross-contamination** of surfaces



Non flammable



Compatible with most hard surfaces



Avoid laundering cloths



Eliminates risks of spills & trips

\* Results from a study published on the American Journal of Infection Control.

Use biocides safely. Always read the label and product information before use.

**THINK** Every frequently touched surface needs to be wiped

[www.diversey.com](http://www.diversey.com)

These materials are provided for general information purposes only and do not replace each user's responsibility to assess the operational, legal and other requirements applicable to each facility. All logos and trademarks are owned by or licensed to Diversey, Inc. © 2021 Diversey, Inc. All Rights Reserved. 88134 MASTER 02/21

Diversey  
**Oxivir**<sup>TM</sup>  
powered by **AHP**<sup>®</sup>

# Feel free to touch

Safety is just 1 wipe away

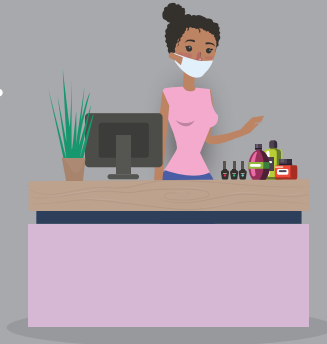
**BEAUTY**

## When to wipe



Chairs and tables after each customer

Periodically at the reception desk



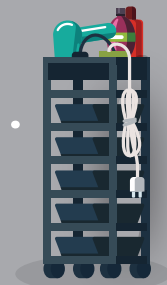
Frequently on card readers, telephones



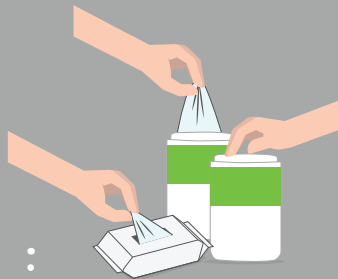
Critical touch points e.g. dispensers, switches and door handles should be wiped twice a day



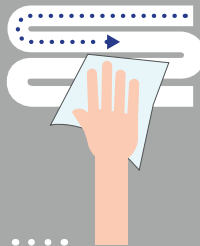
Don't forget to frequently wipe equipment such as hair dryers and equipment trolleys



## How to wipe



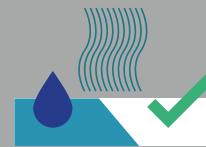
Take a wipe from the dispenser and close the pack firmly to prevent remaining wipes from drying out



Holding the wipe flat in your hand (not scrunched), wipe the surface in an 'S' shape, moving from clean to dirty. Do not go over the same surface twice with the same wipe



Dispose of used wipes in the appropriate waste bin following local policy guidelines. Save your pipes, don't flush wipes.



Allow surface to dry before use

**THINK** Every frequently touched surface needs to be wiped

[www.diversey.com](http://www.diversey.com)

These materials are provided for general information purposes only and do not replace each user's responsibility to assess the operational, legal and other requirements applicable to each facility. All logos and trademarks are owned by or licensed to Diversey, Inc. © 2021 Diversey, Inc. All Rights Reserved. 88134 MASTER 02/21

Diversey  
**Oxivir**<sup>™</sup>  
powered by **AHP**<sup>®</sup>